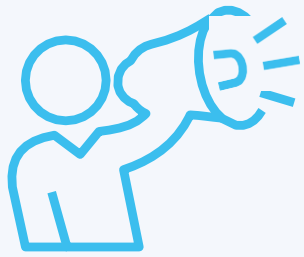


# Something phishy about your email?



Is the email urgent, rewarding or threatening?



Are there grammatical errors or spelling mistakes?



Does the email address appear legitimate?



Do the links look suspicious if you hover over them?



Is there anything odd about the display name?



Does it ask you to change your password or for sensitive information?



If something looks off or if you clicked on a link – report it to your information security team.  
**It's better to tell us than to ignore it.**