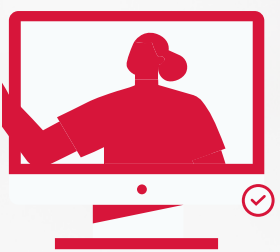


WORKING FROM HOME OR REMOTELY?

Help protect yourself and others



Don't use public Wi-Fi



Conceal any personal or sensitive information in view during video calls



Cover or unplug webcams when you're not using them



Change your default home Wi-Fi password to a strong passphrase



Don't let family or friends use your work device - always lock your screen when taking a break



Don't follow links or open attachments from an untrusted source



If something looks strange on your device or you clicked on a suspicious link, report it immediately to your information security team.
It's better to tell us than to ignore it.

